



HI0870

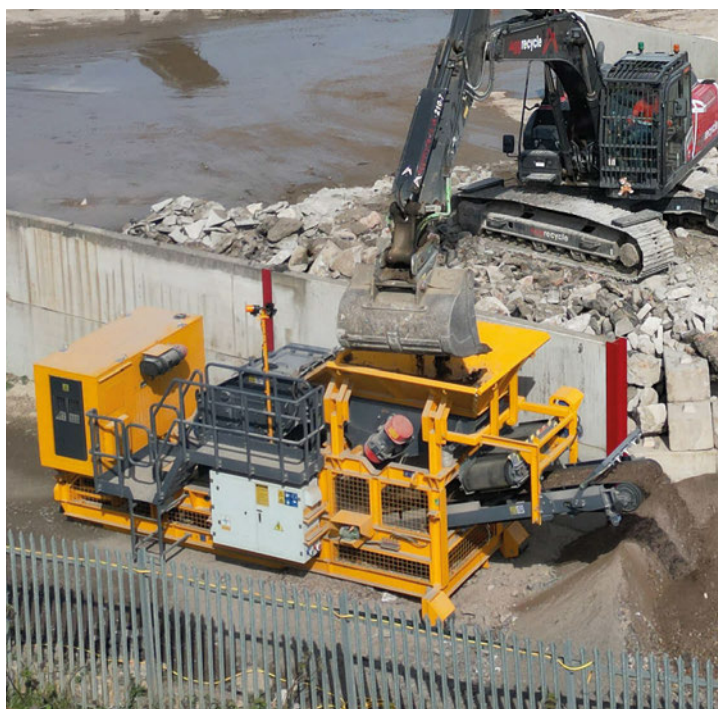
Transportable Impact Crusher



Quality Engineered
Excellence Since 1911

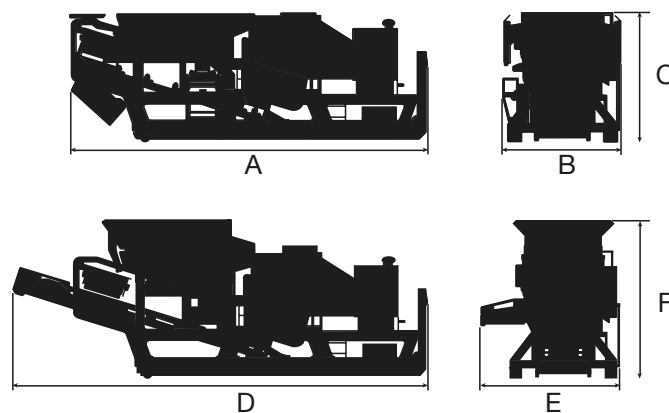
Parker HI0870 Hook-Lift Impactor Crushing Plant

The HI0870 is a fully transportable hook-lift type primary crushing plant complete with a 800mm diameter x 700mm impactor. The under-frame members are designed to the universal industry standard for hook lift frames [DIN or CHEM Standard] and when off-loaded distributes ground loadings. The straight beam chassis design incorporates access and maintenance platforms to the engine, crusher and feed chute, while the touchscreen control system and wireless remote control provide ease of operation, the versatile HI0870 mobile crushing unit is ideally suited for urban recycling and demolition projects.



Options:

- Bypass Chute
- Magnetic Separator
- Dust Suppression
- Dirt Conveyor
- Electric Power



DIMENSIONS

Model	Feed Hopper Capacity	Grizzly Feeder	Size of Crusher	Max Cube Feed Size	Impactor Settings	Side Conveyor Belt Width	Product Conveyor Belt Width	Product Conveyor Discharge Height	Power Unit	DIMENSIONS						Total Weight
										Travelling Position			Operating Position			
										Length [A]	Width [B]	Height [C]	Length [D]	Width [E]	Height [F]	
	m ³				mm				-	mm						kg
HI0870	2.5	680 x 2600	800 x 700	300	20-40	500	650	1750	Diesel Electric	8450	2690	2600	9715	3100	3220	16000

NOTE: Capacities quoted are intended as a guideline only, and are based on a clean, dry graded continuous feed material (weighing 1600kg/m³ (100lb/ft³) and a S.G of 2.7 average), which will readily enter the crusher feed opening without obstruction. Actual capacities can vary considerably from those given, due to the following application and operational factors: 1) **MATERIAL** - Friability & Toughness, 2) **FEED CONDITIONS** - Grading of feed size (Compliance with Euro STD). 3) **INSTALLATION** - Method of feeding, Removal of under size. [Operation at settings outside those stated should be referred to the works].

Parker Plant Limited, Viaduct Works, Canon Street, Leicester, LE4 6GH, United Kingdom

T: +44 (0) 116 266 5999 F: +44 (0) 116 261 0812 W: www.parkerplant.com E: sales@parkerplant.com

All reasonable steps have been taken to ensure the accuracy of this publication. However, due to our policy of continual product development, Parker Plant Limited reserve the right to change details without prior notice. All machines supplied in accordance with our standard conditions. Illustrations and photos may show optional equipment. All rights reserved.